



Style
-and-
Save

Step into style with items valued at
\$30,000* for all our Essence
home designs.

\$1,247,338*

LAND PRICE \$826,348 HOME PRICE \$420,990

FIXED PRICE PACKAGE

/ CLAREMONT MEADOWS | LOT 310

ESSENCE SERIES

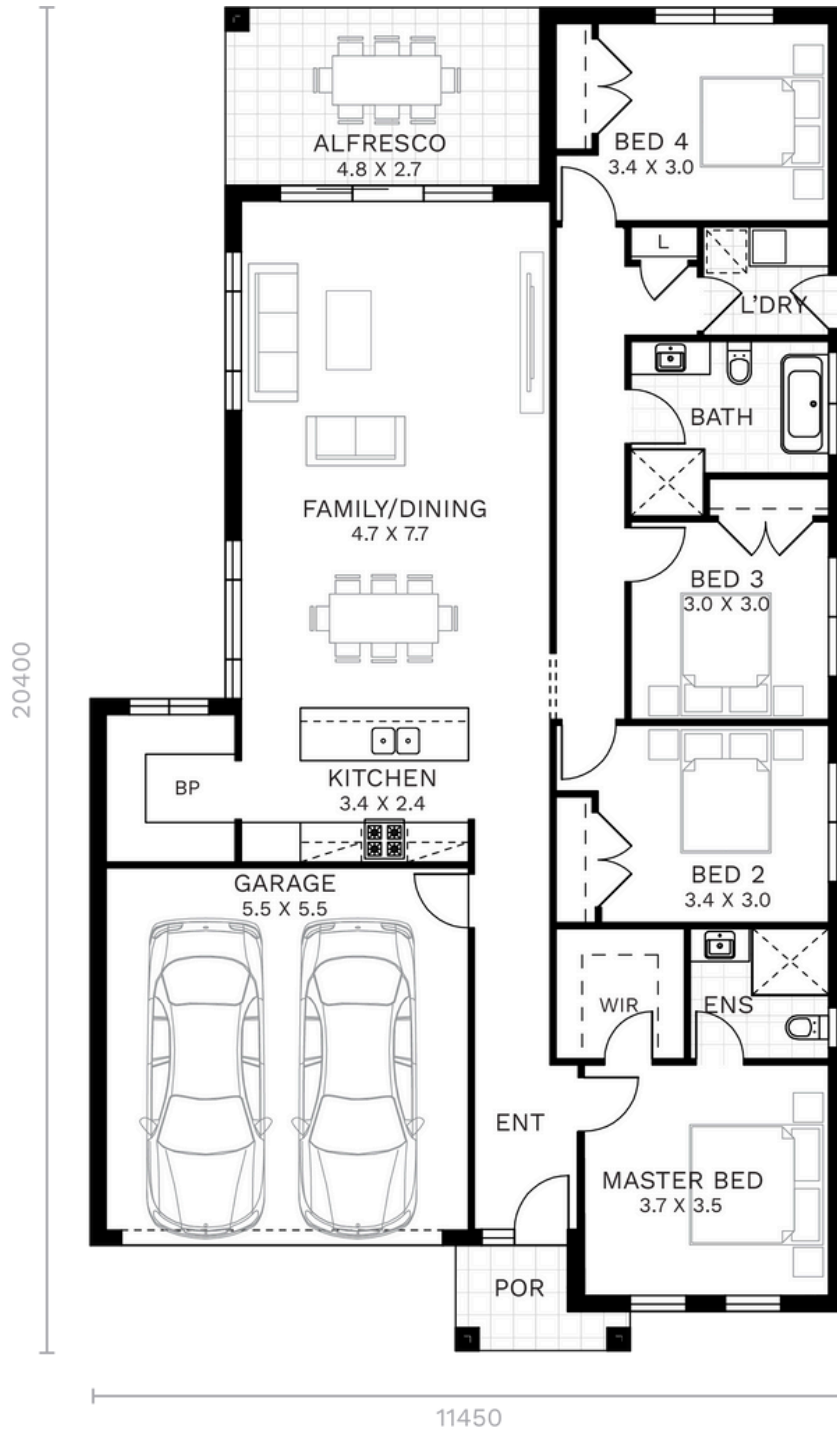
 4  2  2  402m²

Included with your North Homes package:

ELEGANCE UPGRADE PACKAGE

- 2590mm ceiling height to ground floor
- x10 Downlights to living areas
- 20mm standard range Caesarstone® benchtop to kitchen
- Polytec Melamine matt joinery with soft close doors and drawers
- Westinghouse 900mm built-in oven, cooktop, canopy rangehood and 600mm dishwasher and microwave with trim kit
- Actron reverse cycle ducted air-conditioning
- Hybrid flooring from Builder's range to ground floor living areas
- Floor tiling from Builder's range to porch and alfresco
- 800mm wide base laundry cabinet with 33mm laminate benchtop and 45L inset tub.
- Full height tiling to either ensuite or bathroom with square set ceilings to wet areas
- Remote controlled garage door
- Council & statutory requirements
- Fixed site costs
- 7-star Basix
- Landscaping - turf, garden bed, trees, clothesline, letterbox and fencing
- PLUS MORE...

^Price is based on standard floor plan with standard facade. Price includes GST. Additional costs will incur with any alterations to the floor plans or facades. Please refer to Essence inclusions brochure and schedule of inclusions. Site works and statutory requirements are included in the standard model price, and are based on the builder's preferred siting and standard designs. The home complies with a 7 star BASIX rating, based on the existing floor plan and with the above inclusions. The colour scheme has been based on medium colours for the roof and external walls. Any colour, structural or glazing amendments to the dwelling will require an amended BASIX, which could incur additional costs if the BASIX no longer complies. *Refer to Elegance Upgrade inclusions brochure for full list of promotional items and T&Cs. North Homes reserves the right to withdraw promotions without notice.



Ground Floor	151.9 sqm	Alfresco	13 sqm
Garage	32.8 sqm	TOTAL	200.9 sqm 21.6 sq
Porch	3.3 sqm		

1800 116 544 | NORTHOMES.COM.AU



Style — AND — Save

Step into style with items valued at
\$30,000* for all our Essence home designs.

\$10,000*

OFF ESSENCE HOME DESIGNS

PLUS

\$15,000*

DESIGN STUDIO VOUCHER

PLUS

FREE Plain epoxy flooring to the garage **Valued at \$2,450**

FREE Alarm security system with 5 sensors **Valued at \$1,132**

FREE Flyscreens nylon mesh to openable windows **Valued at \$750**

FREE Micron Video Intercom including 7" touch screen monitor with 1080P resolution **Valued at \$708**

FREE Gainsborough Freestyle Trilock Smart Lock **Valued at \$480**

North Homes Style & Save offer is only available on Essence Series home designs and/or home and land packages. To remain valid, contracts must be signed in line with North Homes build process. The \$10,000 discount is off the base price of the Essence home. The \$15,000 design studio voucher is valid for the North Home's studio only. Neither offer is redeemable for cash or credit and cannot be used in conjunction with any other offer. There is no credit for any items forfeited. North Homes reserves the right to withdraw this offer without notice. Please speak to a sales consultant for more information. BL 374999C. Effective 27th January 2025.