



ESSENCE SERIES
/ HAYMAN 17

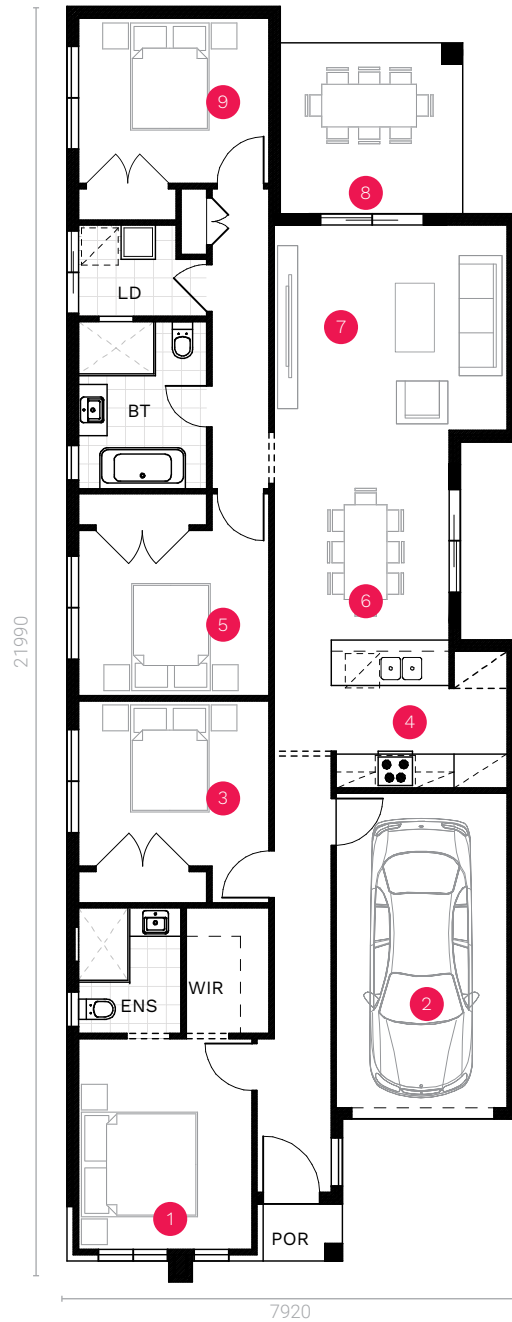
Where elegance, comfort and style unite seamlessly. This four-bedroom residence features two modern bathrooms and a single garage. The heart of the home is a well-designed kitchen that flows into open family and dining areas, leading to an inviting alfresco space. Versatile and thoughtfully crafted, the Hayman 17 caters to a range of lifestyles, from first-time homebuyers to growing families, investors, and downsizers.

Explore the perfect blend of space and charm in this accommodating abode.



HAMPTONS FACADE

/HAYMAN 17



GROUND FLOOR

*Standard floor plan based on Modern façade.

Ground Floor	128.20 sqm	1. Master Bedroom	3.04 x 3.70 m	6. Dining	3.07 x 3.67 m
Garage	18.30 sqm	2. Garage	3.00 x 5.51 m	7. Living	4.09 x 3.60 m
Porch	1.40 sqm	3. Bedroom 2	3.34 x 2.90 m	8. Alfresco	3.20 x 3.00 m
Alfresco	9.60 sqm	4. Kitchen	3.09 x 2.60 m	9. Bedroom 4	3.34 x 2.90 m
TOTAL	157.50 sqm 16.90 sq	5. Bedroom 3	3.34 x 2.90 m		

POR - Porch, PD - Powder Room, LD - Laundry, LIN - Linen, WIL - Walk-in Linen, BP - Butler's Pantry, WIP - Walk-in Pantry, ENS - Ensuite, WIR - Walk-in Robe, BT - Bathroom, WC - Water Closet, BAL - Balcony

/ FACADE OPTIONS



MODERN



HAMPTONS



1800 667 844 | NORTHHOMES.COM.AU

Disclaimer: The information contained in this document is for marketing purposes only and does not form part of the contract of sale. Although all efforts have been made to ensure that the information provided is accurate and in accordance with the provisions of the contract of sale, changes may be made during construction and dimensions, areas, fittings, finishes and specifications are subject to change without notice. Any aspects, views and perspectives disclosed in this brochure are indicative only. North Homes reserves the right to alter designs and specifications without notice at any time. All graphics depicting the houses, landscaping and shared and public spaces are indicative only. Furniture and fittings depicted are not included with any sale and purchasers must refer to the contract of sale for the list of inclusions. The position of furniture and fittings should not be taken to be indicative of power points, TV connections and other amenities. All interested parties are directed to rely on their own enquiries and consult their professional adviser in relation to the terms and materials which are included in the contract of sale. All reasonable care has been taken in the preparation of this brochure, but the vendor and its appointed agents disclaim all liability should any information conveyed by or contained within differ from the contract of sale or the actual constructed development. BL374999C