



COMFORT SERIES
/ ASPEN 30

Stylish appeal radiates from this breathtaking five-bedroom abode. Featuring a generously sized kitchen and dining area that seamlessly extends to the grand alfresco, this home is as welcoming as it is spacious. With creature comforts such as a large walk-in butler's pantry and luxurious master suite with double vanity in the ensuite, the Aspen 30 presents ample room for everyone within.



HAMPTONS FACADE

/ FACADE OPTIONS



CONTEMPORARY

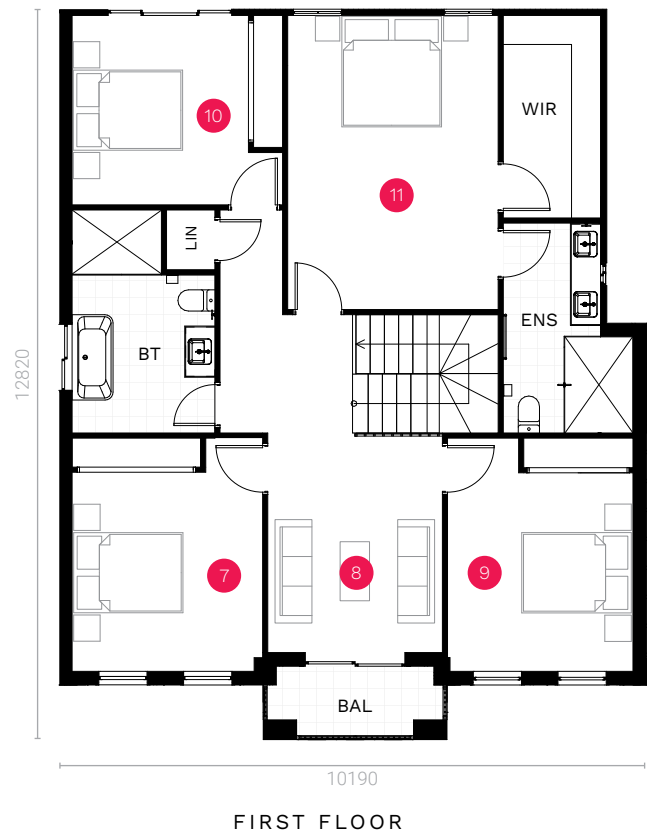
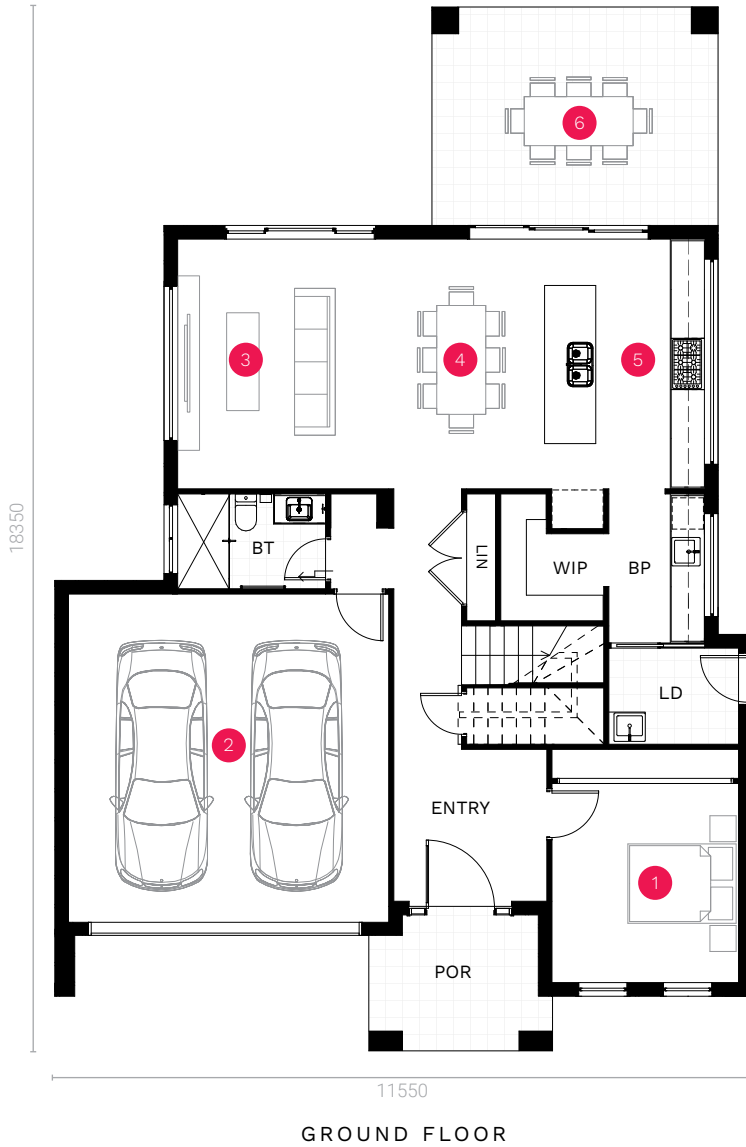


FRENCH PROVINCIAL



TREND

/ASPEN 30

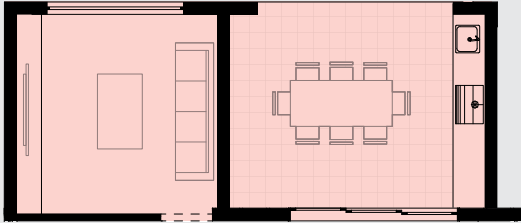


*Standard floor plan based on Hamptons façade.

Ground Floor	100.26 sqm	1. Guest Bedroom	3.50 x 3.28 m	8. Rumpus	4.10 x 3.07 m
Garage	36.28 sqm	2. Garage	5.77 x 5.63 m	9. Bedroom 3	3.41 x 3.02 m
Porch	7.15 sqm	3. Living	4.39 x 3.80 m	10. Bedroom 4	3.18 x 2.77 m
Alfresco	19.32 sqm	4. Dining	4.39 x 2.60 m	11. Master Bedroom	5.07 x 3.70 m
First Floor	117.86 sqm	5. Kitchen	4.39 x 2.86 m		
Balcony	3.96 sqm	6. Alfresco	3.84 x 5.03 m		
TOTAL	280.87 sqm 30.23 sq	7. Bedroom 2	3.41 x 3.11 m		

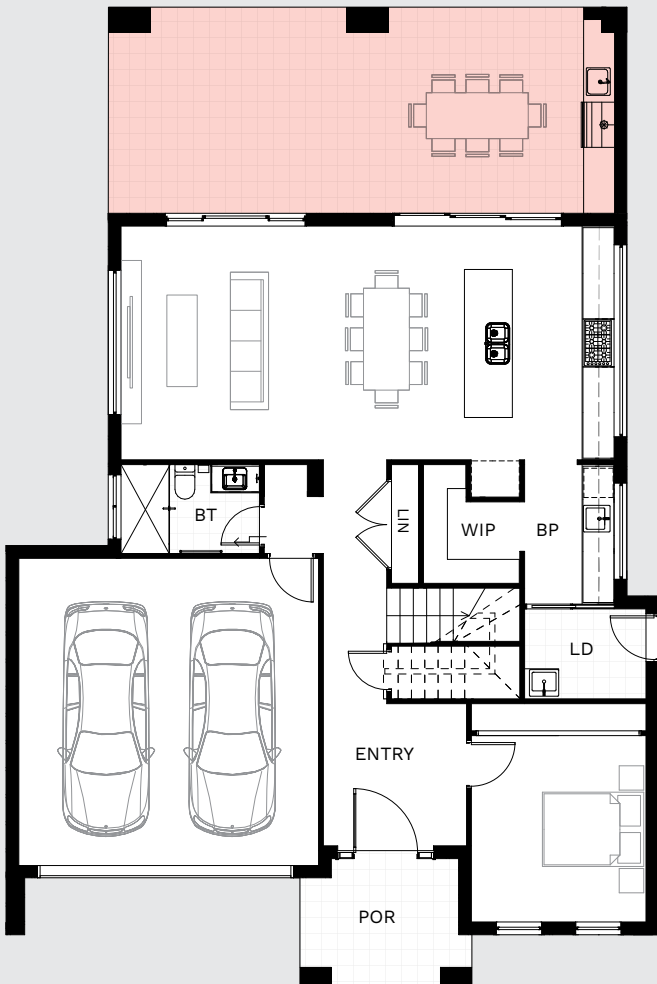
POR - Porch, PD - Powder Room, LD - Laundry, LIN - Linen, WIL - Walk-in Linen, BP - Butler's Pantry, WIP - Walk-in Pantry, ENS - Ensuite, WIR - Walk-in Robe, BT - Bathroom, WC - Water Closet, BAL - Balcony

/ DESIGN OPTIONS



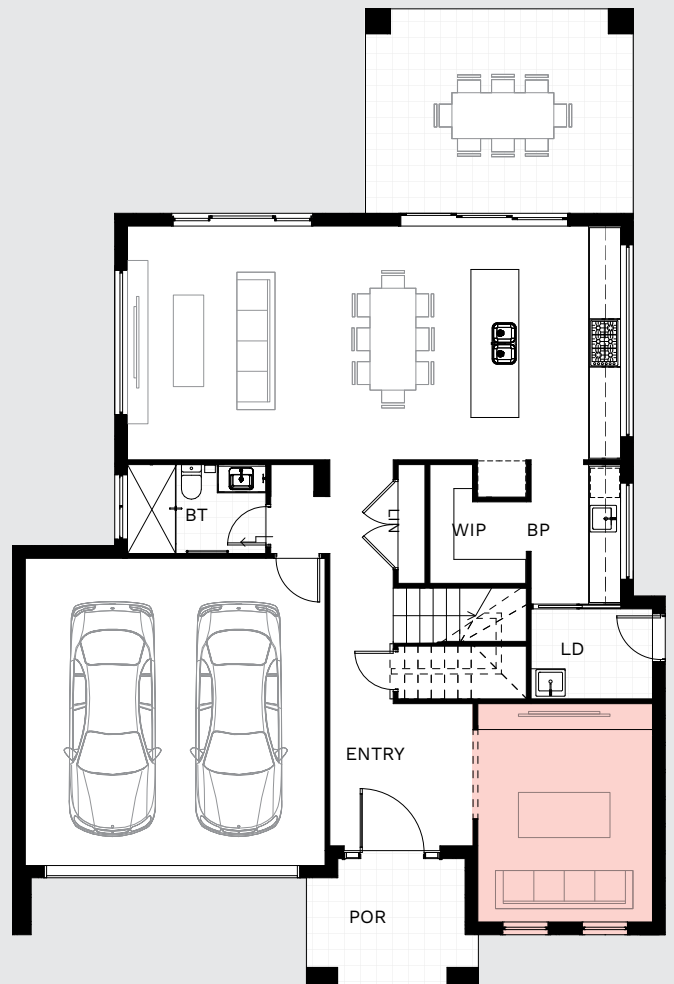
BBQ to Alfresco & Media Room Option

Alfresco - 3.84 x 4.84 m
Media Room - 3.71 x 3.75 m



GROUND FLOOR

Extended Alfresco Option
3.84 x 10.01 m



GROUND FLOOR

Media Room Option
3.60 x 3.26 m



1800 667 844 | NORTHHOMES.COM.AU

Disclaimer: The information contained in this document is for marketing purposes only and does not form part of the contract of sale. Although all efforts have been made to ensure that the information provided is accurate and in accordance with the provisions of the contract of sale, changes may be made during construction and dimensions, areas, fittings, finishes and specifications are subject to change without notice. Any aspects, views and perspectives disclosed in this brochure are indicative only. North Homes reserves the right to alter designs and specifications without notice at any time. All graphics depicting the houses, landscaping and shared and public spaces are indicative only. Furniture and fittings depicted are not included with any sale and purchasers must refer to the contract of sale for the list of inclusions. The position of furniture and fittings should not be taken to be indicative of power points, TV connections and other amenities. All interested parties are directed to rely on their own enquiries and consult their professional adviser in relation to the terms and materials which are included in the contract of sale. All reasonable care has been taken in the preparation of this brochure, but the vendor and its appointed agents disclaim all liability should any information conveyed by or contained within differ from the contract of sale or the actual constructed development. BL374999C