



SIGNATURE SERIES  
/ BYRON 18

Architecturally designed to maximise space within smaller blocks, this flexible floorplan allows for additions such as a media room or children's retreat so you can tailor your home to your family's needs. The sharp design and open flow through each room create an alluring home that reflects thoughtful planning.



/ FACADE OPTIONS



CITY

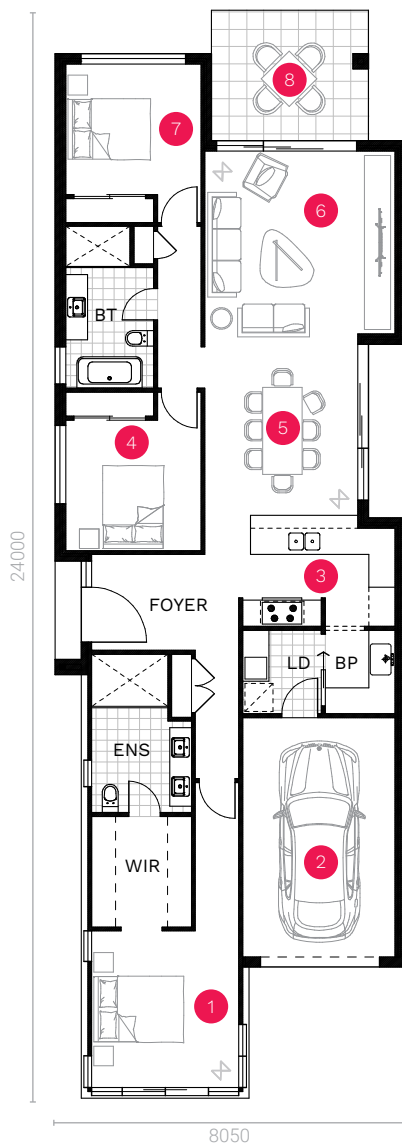


COUNTRY



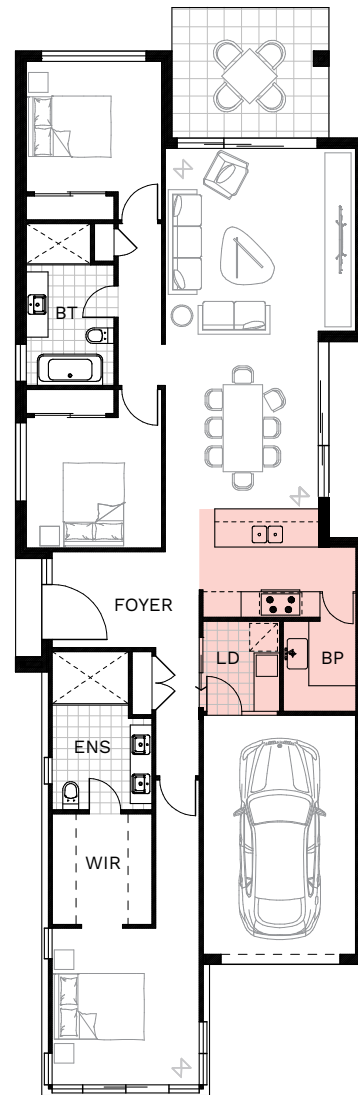
HAMPTONS

# /BYRON 18



GROUND FLOOR

## DESIGN OPTION



GROUND FLOOR

### Alternate Kitchen/Laundry/Butler's Pantry

Kitchen - 3.50 x 2.55 m

Laundry - 2.12 x 1.71 m

Butler's Pantry - 2.12 x 1.80 m

\*Standard floor plan based on Coastal façade.

## SPECIFICATIONS

<b>Ground Floor</b>	141.20 sqm
<b>Garage</b>	21.40 sqm
<b>Porch</b>	1.60 sqm
<b>Alfresco</b>	10.80 sqm
<b>TOTAL</b>	<b>175.00 sqm   18.80 sq</b>

## HOME DETAILS

<b>1. Master Bedroom</b>	3.38 x 3.60 m
<b>2. Garage</b>	3.50 x 5.50 m
<b>3. Kitchen</b>	3.50 x 2.55 m
<b>4. Bedroom 2</b>	3.11 x 3.00 m
<b>5. Dining</b>	3.52 x 3.87 m
<b>6. Living</b>	4.37 x 4.20 m
<b>7. Bedroom 3</b>	3.11 x 3.00 m
<b>8. Alfresco</b>	3.61 x 3.00 m



1800 667 844 | [NORTHHOMES.COM.AU](http://NORTHHOMES.COM.AU)

---

**Disclaimer:** The information contained in this document is for marketing purposes only and does not form part of the contract of sale. Although all efforts have been made to ensure that the information provided is accurate and in accordance with the provisions of the contract of sale, changes may be made during construction and dimensions, areas, fittings, finishes and specifications are subject to change without notice. Any aspects, views and perspectives disclosed in this brochure are indicative only. North Homes reserves the right to alter designs and specifications without notice at any time. All graphics depicting the houses, landscaping and shared and public spaces are indicative only. Furniture and fittings depicted are not included with any sale and purchasers must refer to the contract of sale for the list of inclusions. The position of furniture and fittings should not be taken to be indicative of power points, TV connections and other amenities. All interested parties are directed to rely on their own enquiries and consult their professional adviser in relation to the terms and materials which are included in the contract of sale. All reasonable care has been taken in the preparation of this brochure, but the vendor and its appointed agents disclaim all liability should any information conveyed by or contained within differ from the contract of sale or the actual constructed development. BL374999C