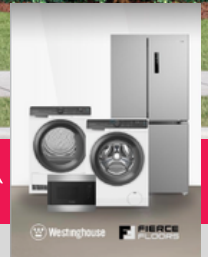



**\$994,000\***

LAND PRICE \$604,131 HOME PRICE \$389,869

**PLUS WESTINGHOUSE APPLIANCES & EPOXY FLOORING AT NO CHARGE<sup>^</sup>**
**FIXED PRICE PACKAGE**


/ MARSDEN PARK | LOT 28


**CUSTOM DESIGN**

Large living spaces and a smart floorplan give this modern home a feeling of comfort and space for the entire family.

**/ INCLUSIONS**

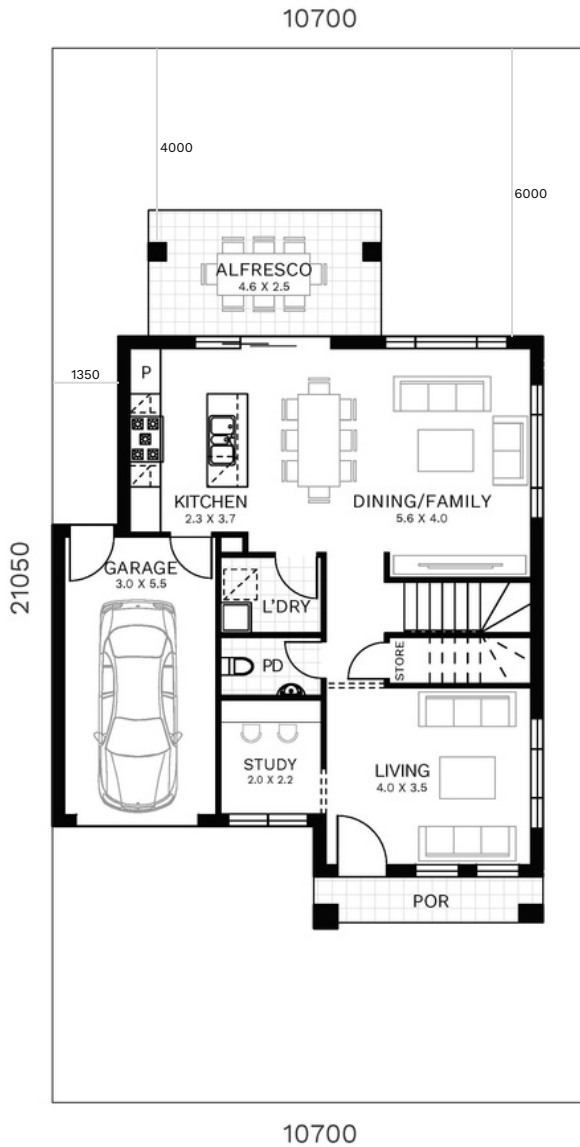
View some of the quality inclusions from our Marsden Park inclusions package, that come as standard in your new North home:

- Polytec Melamine matt joinery, with finger pull and soft close doors and drawers
- 20mm standard range Caesarstone® benchtop to kitchen
- Westinghouse 900mm built-in oven, cooktop, canopy rangehood and 600mm dishwasher
- Actron reverse cycle ducted air-conditioning with minimum 13kW with 2 zones
- Hybrid flooring from Builder's range to ground floor living areas
- Carpet from Builder's range to staircase, bedrooms and first floor living areas
- Floor tiling from Builder's range to porch and alfresco
- 2740mm ceiling height to ground floor and 2440mm to first floor
- Mirror robe doors to all bedrooms
- Downlights to downstairs living areas as per standard electrical plan
- Stainless steel balusters with timber handrail (design specific)
- Square set ceiling to wet areas
- Remote controlled garage door
- Flyscreens to all open windows
- Site works and statutory requirements
- Landscaping - turf, garden bed, trees, clothesline, letterbox and fencing
- PLUS MORE...

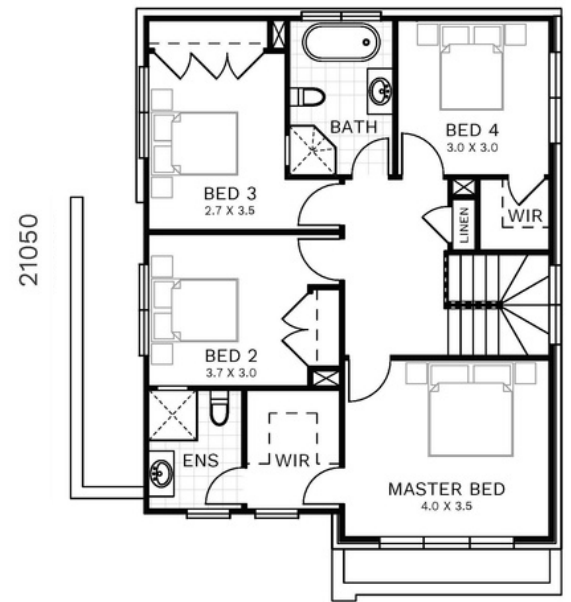
\*Price is based on standard floor plan with standard facade. Price includes GST. Facade depicted may include upgrade items and additional cost. Additional costs will incur with any alterations to the floor plans or facades. Price may vary with BASIX requirements. Please refer to inclusions brochure for full list of inclusions. ^Refer to Finish with Finesse promotional brochure for full product details and terms & conditions.



TYPE 5  
FLOORPLAN



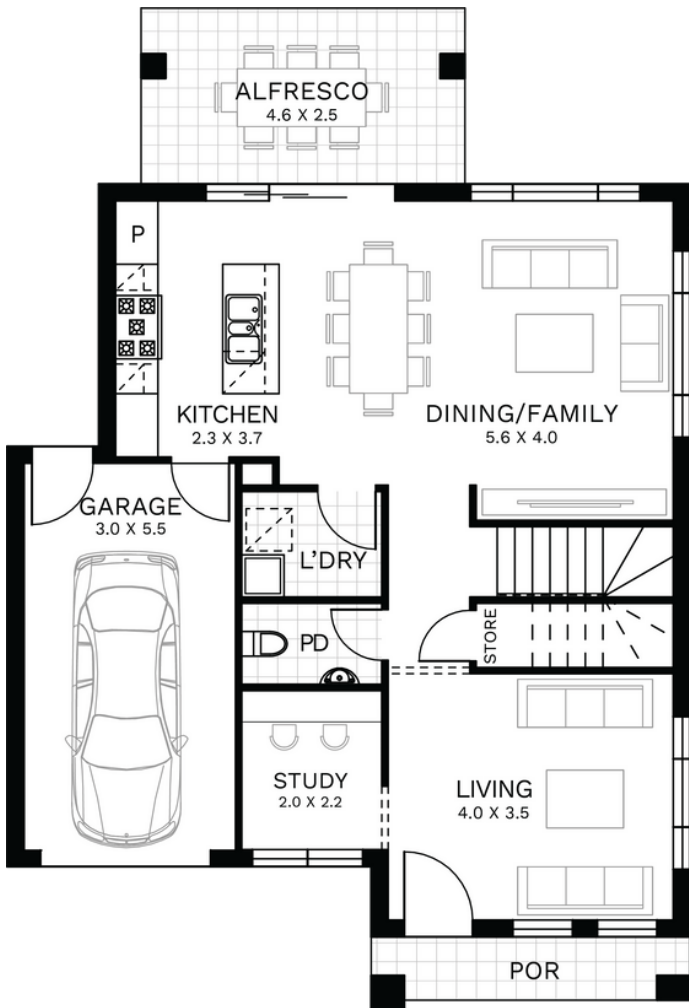
GROUND FLOOR



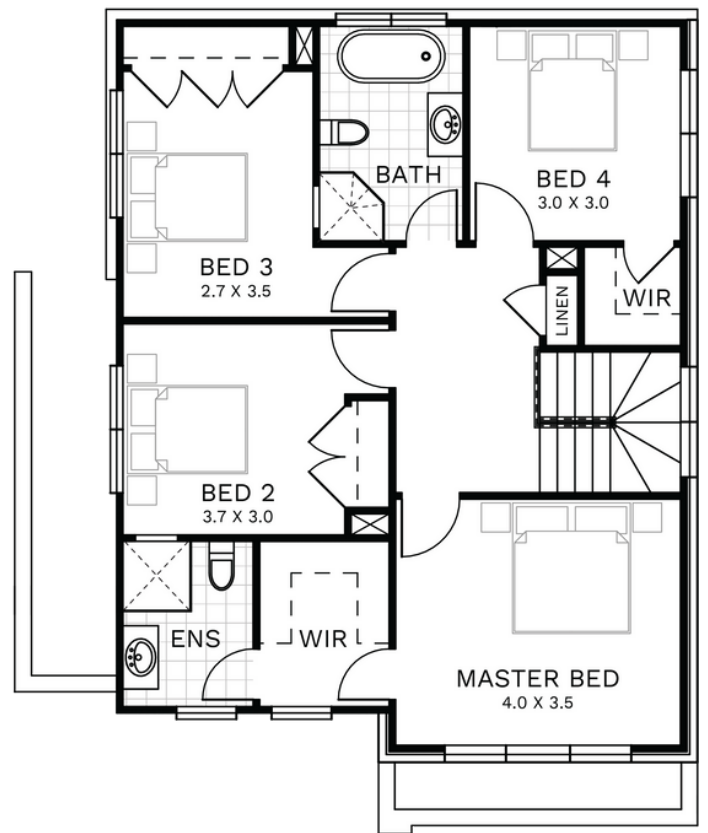
FIRST FLOOR

Ground Floor	74.90 sqm	Alfresco	11.50 sqm
Garage	18.90 sqm	First Floor	86.20 sqm
Porch	4.10 sqm	<b>TOTAL</b>	<b>195.60 sqm   21.00 sq</b>

1800 116 544 | NORTHOMES.COM.AU



GROUND FLOOR



FIRST FLOOR