



SIGNATURE SERIES

/ SAVANNAH 32



FEATURE HOME BY APPOINTMENT ONLY

/ COUNTRY



## / INTRODUCING NORTH HOMES: ELEGANCE AND EXCELLENCE IN HOME DESIGN

At North Homes, we're dedicated to turning your dream of the perfect home into a reality. We understand that your home is more than just a place to live; it's a reflection of your lifestyle, your aspirations, and your unique vision.

Step into our meticulously crafted homes, and you will find yourself immersed in a world of refined luxury and unparalleled quality. Each space has been thoughtfully designed to showcase the perfect fusion of classical charm and modern functionality.




Our expert team is committed to helping you find the ideal home that aligns seamlessly with your lifestyle and aspirations. Whether you seek a sanctuary for your family, an urban oasis, or a sprawling estate for grand living, North Homes has the ideal solution for your discerning tastes.

When you choose North Homes, you are not merely investing in a property; you are embracing a future filled with sophistication, comfort, and security. We are here to guide you through every facet of the process, from initial design concepts to the moment you step into the doorway of your dream home.

Embark on an exploration of our homes, where elegance and professionalism converge to redefine the concept of home. We extend an invitation to you to join us on a journey of discovery – one that leads to the realisation of your ultimate residential dreams. Welcome to North Homes – where your future begins!

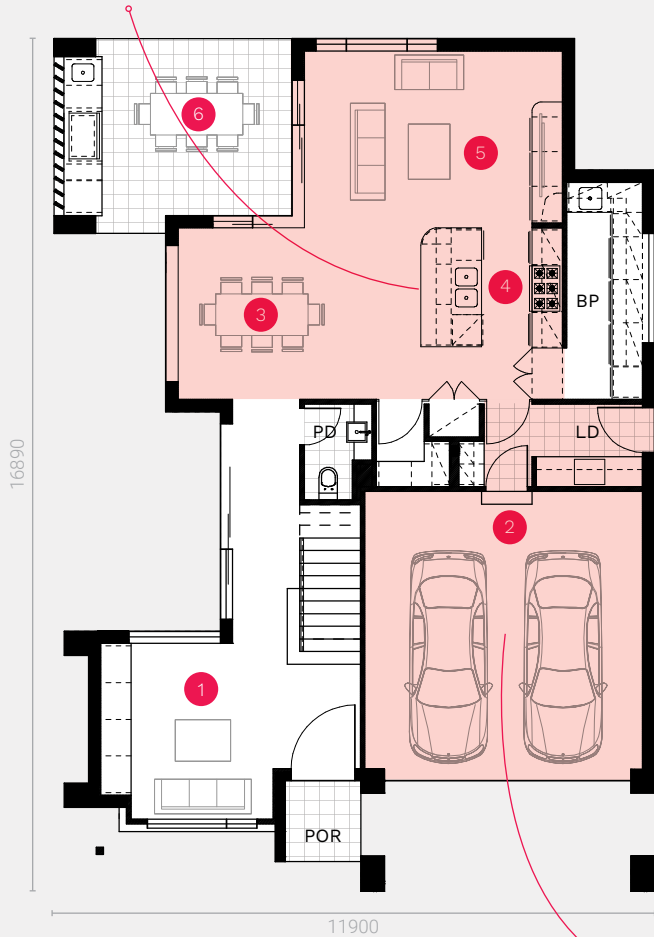
# / SAVANNAH 32

## CORNER LOT FLOOR PLAN

 4
  2.5
  2

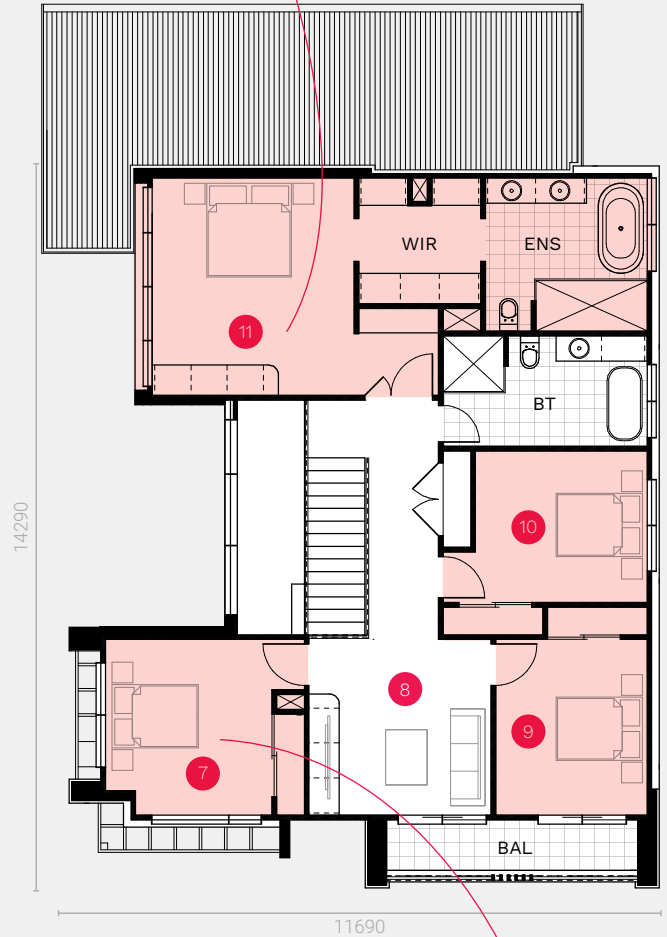
*Open plan kitchen, dining and living room*

*Master suite at the back of the house for more privacy*



GROUND FLOOR

*Continuous flow between garage, laundry and kitchen*



FIRST FLOOR

*Generous bedroom sizes*

Ground Floor	108.10 sqm	1. Multi Room	3.41 x 3.52 m	7. Bedroom 4	3.90 x 3.40 m
Garage	32.90 sqm	2. Garage	5.50 x 5.50 m	8. Rumpus	3.60 x 3.40 m
Porch	2.70 sqm	3. Dining	4.90 x 3.40 m	9. Bedroom 2	3.00 x 3.40 m
Alfresco	17.30 sqm	4. Kitchen	2.70 x 3.40 m	10. Bedroom 3	4.00 x 3.00 m
First Floor	126.20 sqm	5. Family	5.10 x 3.50 m	11. Master Bedroom	4.40 x 4.30 m
Balcony	6.70 sqm	6. Alfresco	4.72 x 3.50 m		
<b>TOTAL</b>	<b>293.90 sqm   31.60 sq</b>				

POR - Porch, PD - Powder Room, LD - Laundry, BP - Butler's Pantry, ENS - Ensuite, WIR - Walk-in Robe, BT - Bathroom, BAL - Balcony

\*Floor plan is based on corner lot as displayed and includes upgraded features and cabinetry. For information on the standard floor plan and inclusions and exclusions, please speak to a Sales Consultant.



1800 667 844 | [NORTHHOMES.COM.AU](http://NORTHHOMES.COM.AU)

---

**Disclaimer:** The information contained in this document is for marketing purposes only and does not form part of the contract of sale. Although all efforts have been made to ensure that the information provided is accurate and in accordance with the provisions of the contract of sale, changes may be made during construction and dimensions, areas, fittings, finishes and specifications are subject to change without notice. Any aspects, views and perspectives disclosed in this brochure are indicative only. North Homes reserves the right to alter designs and specifications without notice at any time. All graphics depicting the houses, landscaping and shared and public spaces are indicative only. Furniture and fittings depicted are not included with any sale and purchasers must refer to the contract of sale for the list of inclusions. The position of furniture and fittings should not be taken to be indicative of power points, TV connections and other amenities. All interested parties are directed to rely on their own enquiries and consult their professional adviser in relation to the terms and materials which are included in the contract of sale. All reasonable care has been taken in the preparation of this brochure, but the vendor and its appointed agents disclaim all liability should any information conveyed by or contained within differ from the contract of sale or the actual constructed development. BL374999C