



**\$1,977,000\***

LAND PRICE \$1,271,000 HOME PRICE \$706,000

/ NORWEST | LOT 14

 4  2.5  2  282m<sup>2</sup>

**CUSTOM DESIGN**

This stunning home will impress with its modern design and generous living spaces, perfect for the family and entertaining.

**/ INCLUSIONS**

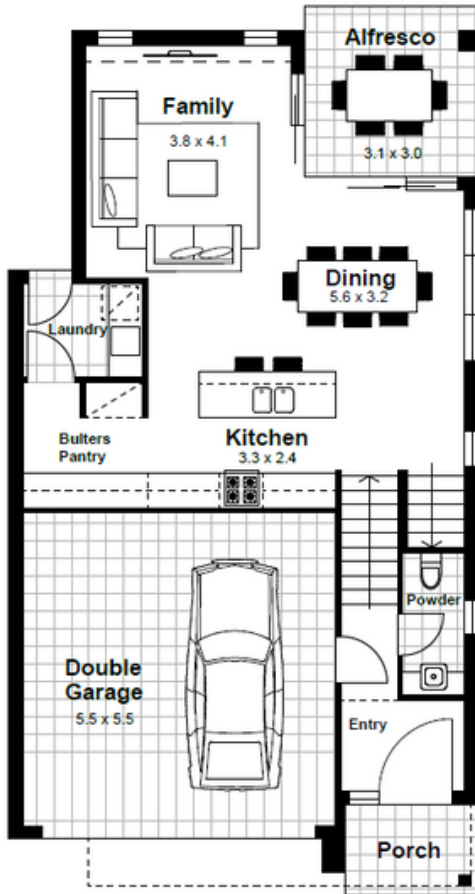
View some of the quality inclusions from our Norwest inclusions package, that come as standard in your new North home:

- Polytec Melamine Matt and Woodmatt joinery, with finger pull and soft close doors and drawers
- 40mm standard range Caesarstone® benchtop to kitchen and butler's pantry
- Smeg 900mm built-in oven, cooktop, canopy rangehood and dishwasher
- Actron reverse cycle ducted air-conditioning
- 20mm Caesarstone benchtop to bathroom, ensuite & laundry
- 3m ceiling height to ground floor and 2.7m ceiling height first floor
- Hybrid flooring or tiles to downstairs living areas from builder's range
- Carpet to first floor and stairs
- Tiles to wet areas, alfresco, porch and balcony
- Downlights throughout as per electrical plan
- Mirror robe doors to bedrooms as per plan
- Square set cornices
- Timber staircase with stainless steel balusters and timber handrail; or plasterboard balustrade and timber handrail capping, as per floorplan
- Rheem 26-litre instantaneous gas hot water system
- Remote controlled garage door
- Flyscreens to all open windows
- Landscaping - completely landscaped front & rear with buffalo turf, clothesline, letterbox and fencing
- PLUS MORE...

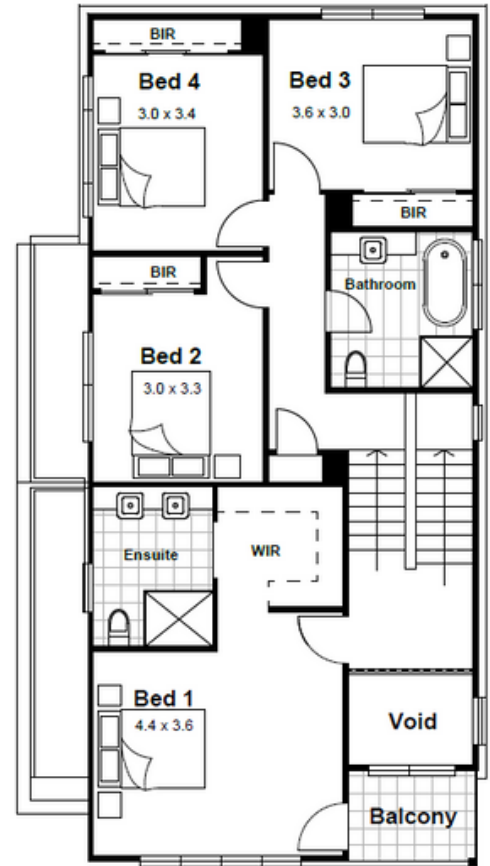
\*Price is based on standard floor plan with standard facade. Price includes GST. Facade depicted may include upgrade items and additional cost. Additional costs will incur with any alterations to the floor plans or facades. Price may vary with BASIX requirements. Please refer to inclusions brochure for full list of inclusions.



TYPE 5 FLOOR PLAN



GROUND FLOOR



FIRST FLOOR

|              |           |
|--------------|-----------|
| Ground Floor | 70.30 sqm |
| Garage       | 33.00 sqm |
| Porch        | 4.10 sqm  |
| Alfresco     | 9.10 sqm  |

|              |                              |
|--------------|------------------------------|
| First Floor  | 98.50 sqm                    |
| Balcony      | 4.20 sqm                     |
| <b>TOTAL</b> | <b>219.20 sqm   23.50 sq</b> |

1800 116 544 | NORTHOMES.COM.AU

Disclaimer: The information contained in this document is for marketing purposes only and does not form part of the contract of sale. Although all efforts have been made to ensure that the information provided is accurate and in accordance with the provisions of the contract of sale, changes may be made during construction and dimensions, areas, fittings, finishes and specifications are subject to change without notice. North Homes retains the right to modify prices at its discretion and without prior notification. The commencement date is contingent upon the timeline of customer, developer, and council meetings, encompassing factors such as land registration, client-requested alterations, developer and council endorsements, as well as the timely acceptance of tender and contract within 7 days, respectively. The indicated prices are subject to compliance with developer, council, and legal mandates and condition of utility services. Adjustments to land dimensions and positioning of utility services, including sewer and stormwater systems, drainage fixtures, Telstra infrastructure, trees, butterfly drains, driveway crossovers, pram ramps, electrical and other easements, or Section 88B instruments, might necessitate revisions to the floor plan or siting arrangements. The terms and conditions of sale as stipulated by North Homes are applicable. For further information, kindly consult with your North Homes consultant. Builder's Licence Number 374999c . Effective from April 2024.